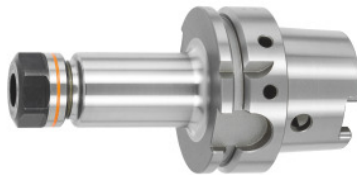


Garant
ER collet chuck, HSK-A 63 long, for ER collet size: 16

Order data

Order number	305390 16
GTIN	4045197289629
Item class	31A

Description
Version:

With Balluff/RFID chip bore.

With Ballufchip bore.

Application:

For clamping tools with plain shanks in ER collets to DIN 6499 – Form A and B.

Supplied with:

Coated high-speed clamping nut.

Optional extras:

Coolant tube No. 309880, socket wrench for coolant tubes No. 309890, ER collets No. 308881 – 309434, ER chuck key No. 309680 or 613300.

Technical description

Overhang dimension A	100 mm
Clamping range	0.5 - 10 mm
for ER collets	16
External Ø D	28 mm
Adapter	HSK-A 63 long
Arbor standard	DIN 69882-6
Arbor standard	DIN 69893

Arbor standard	ISO 12164-1
Shape	A
Balance quality G at rotational speed	G 2.5 at 25,000 rpm
Concentricity	≤ 3 μm
Machining strategy	HSC
Balluffchip bore	yes
Type of product	Collet chuck

Accessories

ER collet Nominal clamping Ø d 1 mm	308901 1
ER collet Nominal clamping Ø d 1,5 mm	308901 1,5
ER collet Nominal clamping Ø d 10 mm	308901 10
ER collet Nominal clamping Ø d 2 mm	308901 2
ER collet Nominal clamping Ø d 2,5 mm	308901 2,5
ER collet Nominal clamping Ø d 3 mm	308901 3
ER collet Nominal clamping Ø d 4 mm	308901 4
ER collet Nominal clamping Ø d 5 mm	308901 5
ER collet Nominal clamping Ø d 6 mm	308901 6
ER collet Nominal clamping Ø d 7 mm	308901 7
ER collet Nominal clamping Ø d 8 mm	308901 8
ER collet Nominal clamping Ø d 9 mm	308901 9
ER colletwith seal Nominal clamping Ø d 10 mm	308906 10
ER colletwith seal Nominal clamping Ø d 3 mm	308906 3
ER colletwith seal Nominal clamping Ø d 4 mm	308906 4
ER colletwith seal Nominal clamping Ø d 5 mm	308906 5
ER colletwith seal Nominal clamping Ø d 6 mm	308906 6
ER colletwith seal Nominal clamping Ø d 7 mm	308906 7
ER colletwith seal Nominal clamping Ø d 8 mm	308906 8

ER colletwith seal Nominal clamping Ø d 9 mm	308906 9
ER collet Nominal clamping Ø d 1 mm	308920 1
ER collet Nominal clamping Ø d 10 mm	308920 10
ER collet Nominal clamping Ø d 2 mm	308920 2
ER collet Nominal clamping Ø d 3 mm	308920 3
ER collet Nominal clamping Ø d 4 mm	308920 4
ER collet Nominal clamping Ø d 5 mm	308920 5
ER collet Nominal clamping Ø d 6 mm	308920 6
ER collet Nominal clamping Ø d 7 mm	308920 7
ER collet Nominal clamping Ø d 8 mm	308920 8
ER collet Nominal clamping Ø d 9 mm	308920 9
ER colletwith seal Nominal clamping Ø d 10 mm	308921 10
ER colletwith seal Nominal clamping Ø d 3 mm	308921 3
ER colletwith seal Nominal clamping Ø d 4 mm	308921 4
ER colletwith seal Nominal clamping Ø d 5 mm	308921 5
ER colletwith seal Nominal clamping Ø d 6 mm	308921 6
ER colletwith seal Nominal clamping Ø d 7 mm	308921 7
ER colletwith seal Nominal clamping Ø d 8 mm	308921 8
ER colletwith seal Nominal clamping Ø d 9 mm	308921 9
ER colletwith seal and spray nozzles Nominal clamping Ø d 10 mm	308922 10
ER colletwith seal and spray nozzles Nominal clamping Ø d 3 mm	308922 3
ER colletwith seal and spray nozzles Nominal clamping Ø d 4 mm	308922 4
ER colletwith seal and spray nozzles Nominal clamping Ø d 5 mm	308922 5
ER colletwith seal and spray nozzles Nominal clamping Ø d 6 mm	308922 6
ER colletwith seal and spray nozzles Nominal clamping Ø d 7 mm	308922 7

ER colletwith seal and spray nozzles Nominal clamping Ø d 8 mm	308922 8
ER colletwith seal and spray nozzles Nominal clamping Ø d 9 mm	308922 9
ER collet set 10 pieces 1–10 mm	309012
ER collet set 6 pieces, 3, 4, 5, 6, 8, 10 mmwith seal	309014
ER collet set 10 pieces 1–10 mm	309160
ER collet set 10 pieces 1–10 mmwith seal	309164
ER collet set 10 pieces 1–10 mmwith seal and spray nozzles	309165
ET collet for thread tapping, with axial compensation Nominal clamping Ø d 2,8 mm	309425 2,8
ET collet for thread tapping, with axial compensation Nominal clamping Ø d 3,5 mm	309425 3,5
ET collet for thread tapping, with axial compensation Nominal clamping Ø d 4,5 mm	309425 4,5
ET collet for thread tapping, with axial compensation Nominal clamping Ø d 6 mm	309425 6
ER clamping nutHigh Speed for ER 16	309610 16
HiRunER clamping wrench for torque wrench Type 16	309749 16
Single open ended spanner Width across flats 25 mm	613300 25